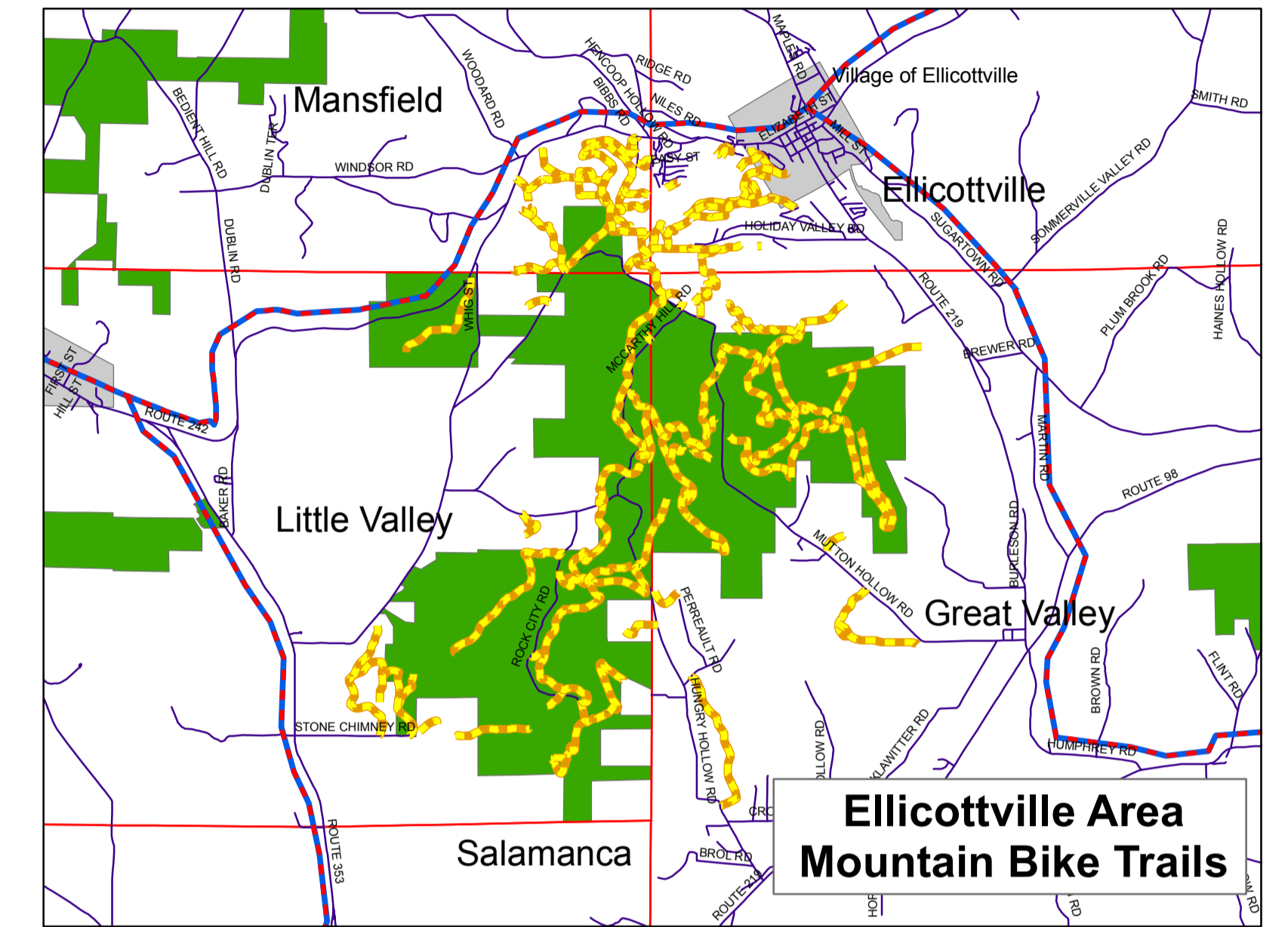
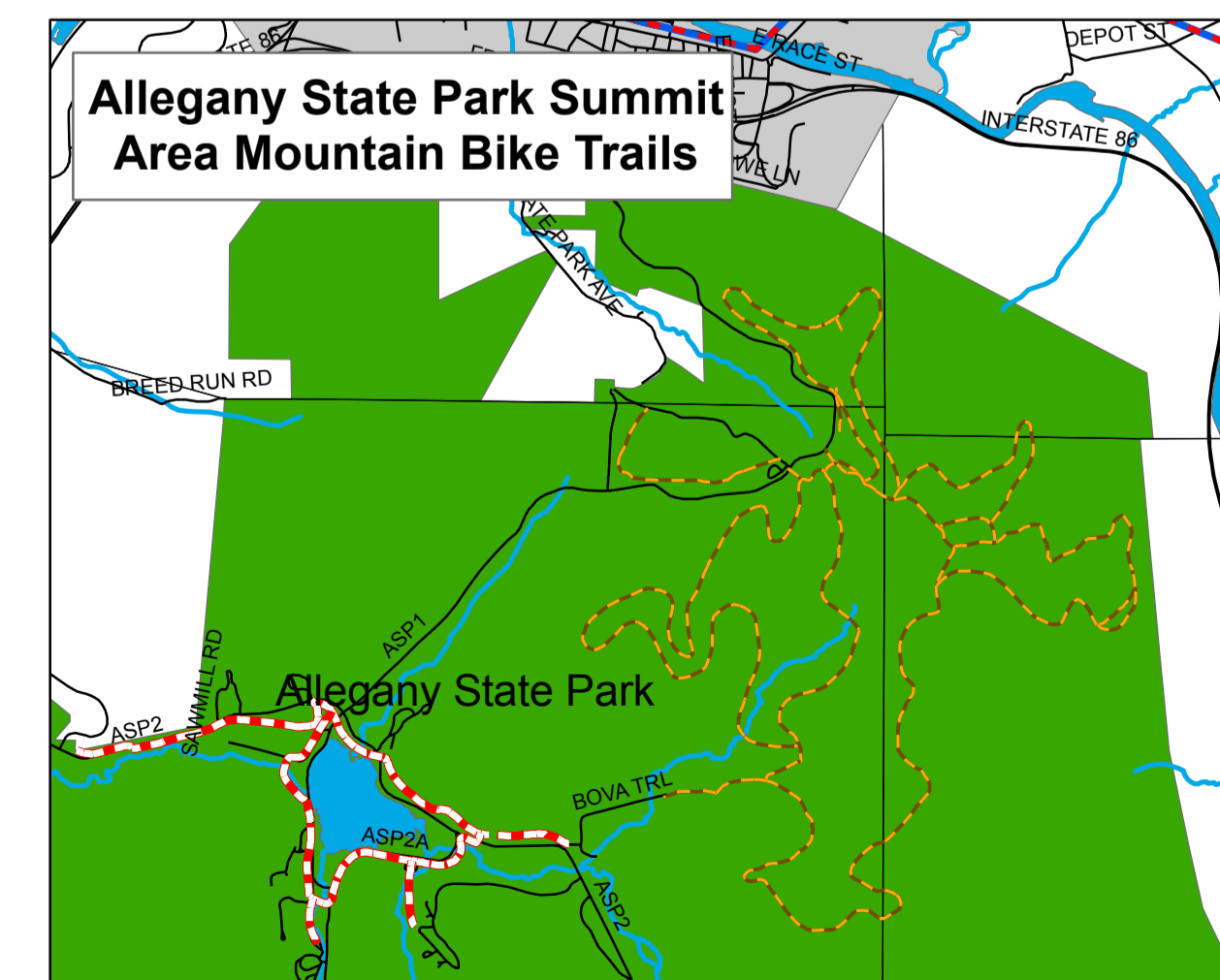
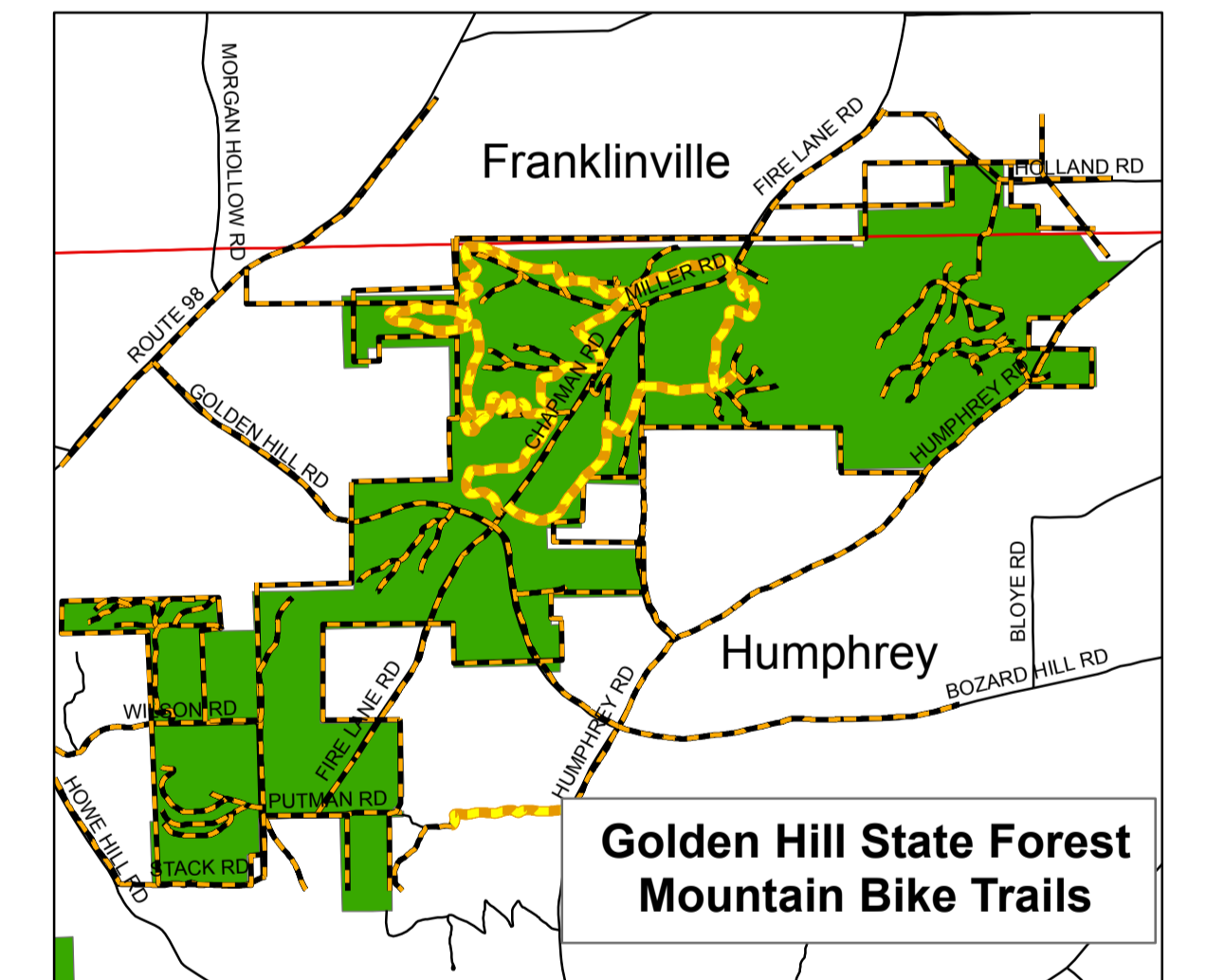


Enchanted Mountains Bike Trails



- Legend**
- Bike Trails on Roads
 - Bike Paths
 - Interstate Highway
 - Major Highways
 - Streets & Roads
 - Towns
 - State Recreation Land
 - Cities
 - Villages
 - Hamlets
 - Mountain_Bike_Only_Trails



Biking Trails

Southern Tier Route
This route crosses several southern counties of New York State, as well as parts of Pennsylvania, Connecticut and New Jersey. It passes through 10 towns and covers 58 miles.

Erie Mohawk Trail
This trail crosses several northern counties of New York State. It starts at the state border in Rensselaer County and exits at the Pennsylvania border in Chautauque County.

Bikecentennial Route
This route runs from Iowa to Maine. It enters our County at the Allegany/Cattaraugus County border, travels 55.3 miles and exits south at the New York State/Pennsylvania border, near Onville Marina.

Paved Hiking and Biking Trails

The Allegheny River Trail is 5.6 miles of paved trail that runs along the Allegheny River and crosses over the western end of Olean, New York and through St. Bonaventure University.

Allegany State Park offers miles of paved and unpaved trails to either hike or bike. The paved trail circles the Red House area of the park, while the unpaved trails are scattered throughout the park.