

SPECIFICATIONS:

SHAPE:

SIZE:

SUBMITTAL:

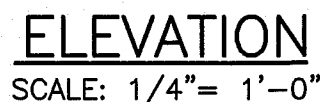
INSPECTION:

STRUCTURAL NOTES FOR REINFORCED CONCRETE BOX CULVERT:

-
- 1/2" DESIGN GAP
- 3"x2'-4"x1/2" THK.
FIELD WELD TO 8'x 8' R'S
BRUSH GALV., PAINT AFTER WELD
(FURNISHED BY SUPPLIER)
- DRAW TOGETHER HARDWARE
TWO(2) SETS (2 RODS) FOR EACH
SIDE OF EACH JOINT. INCLUDED
SHALL BE APPROPRIATE NUTS
BOLTS, WASHERS.
- 8"x8" PLATES FLUSH
WITH CULVERT WALLS
- DAYTON/RICHMOND TYPE F-57 3/4"Ø
EXPANDED COIL FERRULE INSERTS OR
COUNTY APPROVED EQUIVALENT.
- COAT EXTERIOR TOP AND 1 FOOT DOWN
SIDES OF BOX WITH BITUMINOUS ASPHALT
MATERIAL (SEE NOTE 15)
- 18'-0"
- 9'-0"
- 1'-0"
- 1'-0"

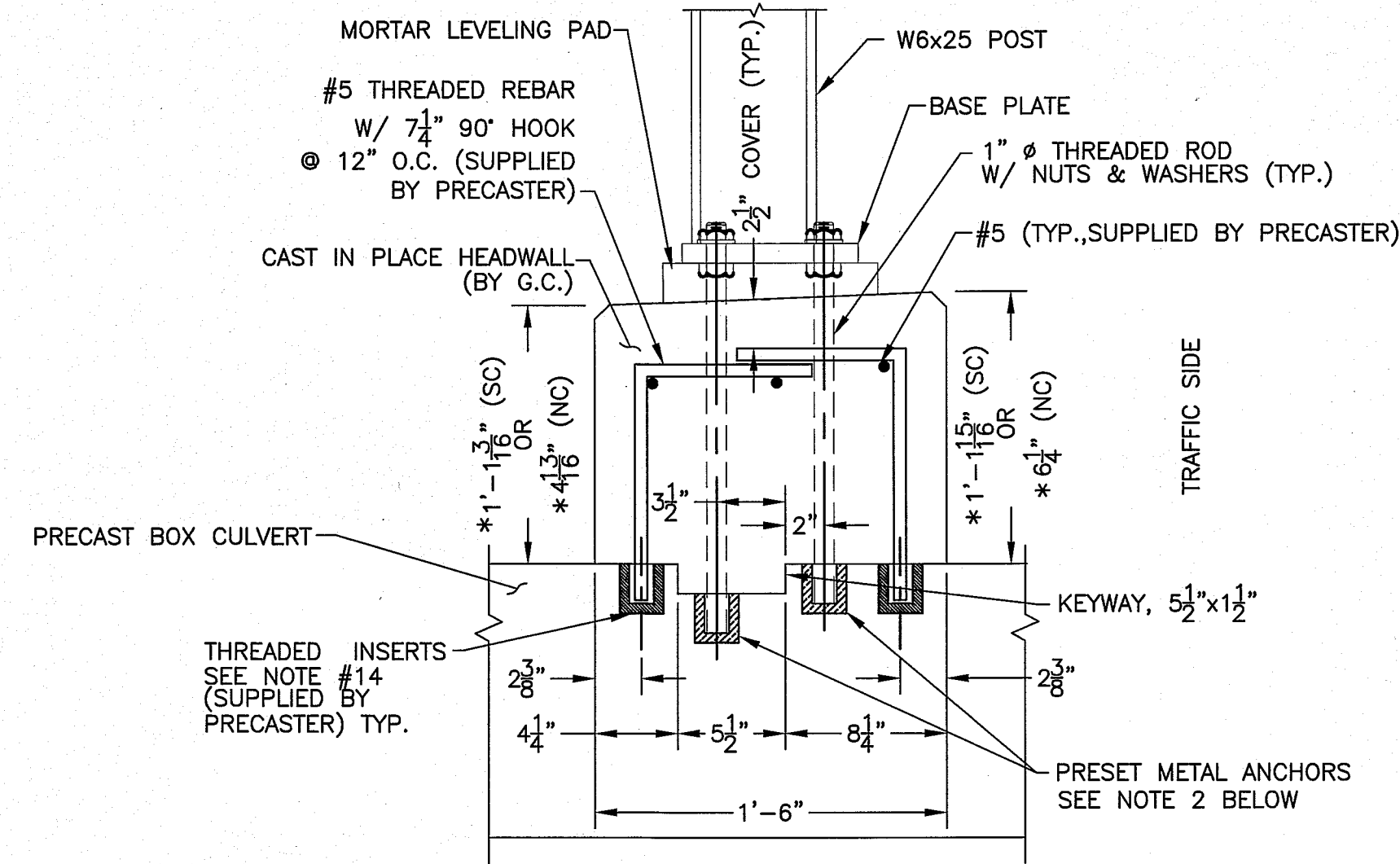
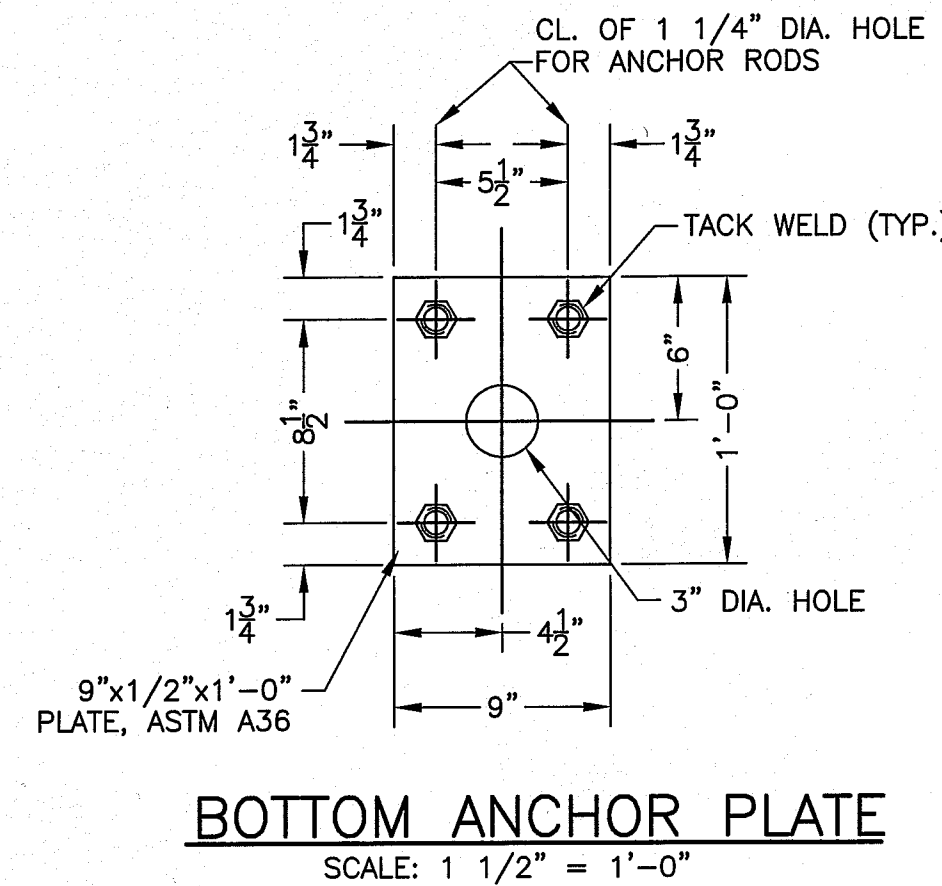
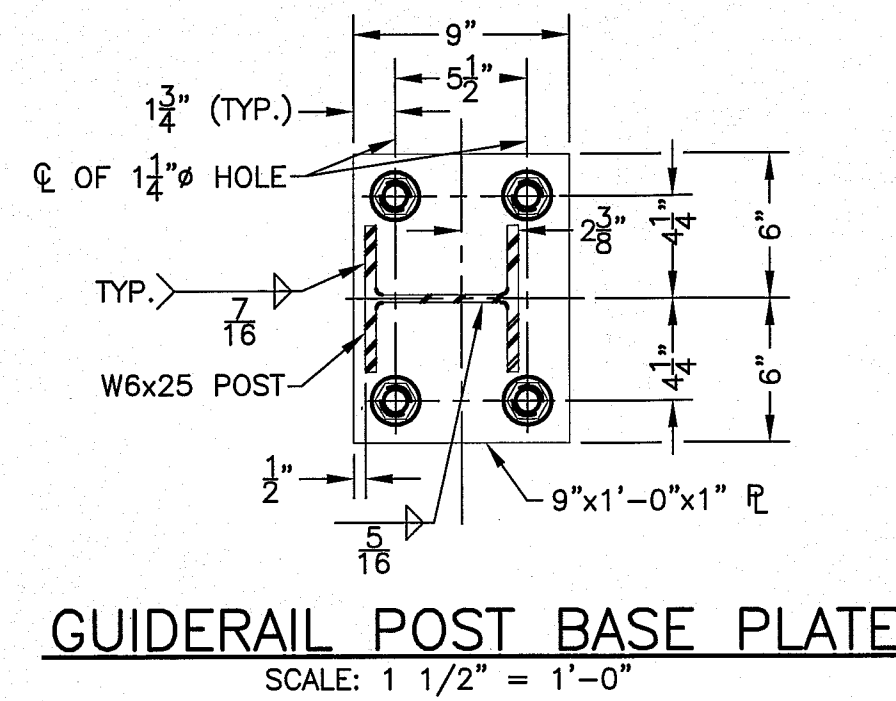
NOTE: ALL DRAW TOGETHER HARDWARE TO STAY IN PLACE.

SCALE: 1/4"=1'-0"

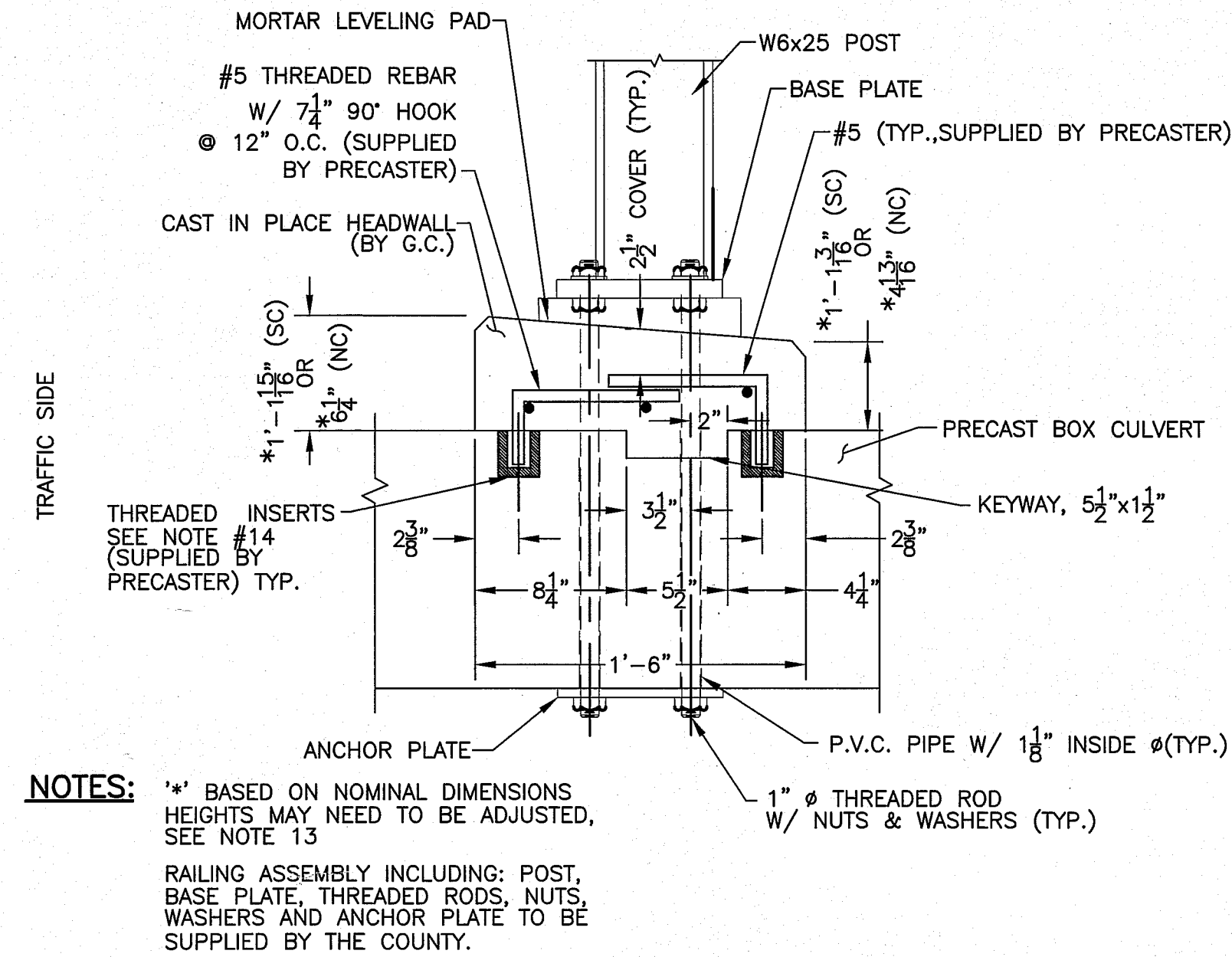


NOTE: $\frac{1}{2}$ " ϕ STAINLESS STEEL ALL THREAD
TO BE SUPPLIED BY CATT. COUNTY





- NOTES:**
- 1) PLATES, THREADED ROD, NUTS, WASHERS, RAILING POSTS, AND MORTAR PADS TO BE SUPPLIED BY CATTARAUGUS COUNTY.
 - 2) PRESET METAL ANCHORS SHALL BE FURNISHED BY PRECASTER AND DESIGNED TO RESIST A MINIMUM ALLOWABLE PULLOUT LOAD OF 6.5 KIPS PER BOLT AND AN ALLOWABLE SHEAR LOAD OF 3.5 KIPS PER BOLT ACTING SIMULTANEOUSLY.
 - 3) ** BASED ON NOMINAL DIMENSIONS, HEIGHTS MAY NEED TO BE ADJUSTED, SEE NOTE 13.



- NOTES:**
- ** BASED ON NOMINAL DIMENSIONS HEIGHTS MAY NEED TO BE ADJUSTED, SEE NOTE 13
- RAILING ASSEMBLY INCLUDING: POST, BASE PLATE, THREADED RODS, NUTS, WASHERS AND ANCHOR PLATE TO BE SUPPLIED BY THE COUNTY.

© CATTARAUGUS COUNTY-2017

DATE: APRIL 2017

NOTED REVISIONS

SURVEY # BK LOT PG. T R

CATTARAUGUS COUNTY
DEPARTMENT OF PUBLIC WORKS
8810 NYS ROUTE 242
LITTLE VALLEY, NEW YORK 14765
716-688-0121

BOX CULVERT DETAILS (2 OF 2)

TOWN OF FRANKLINVILLE
COUNTY ROAD 24
FRANKLINVILLE CULVERT 19

SHEET 2 OF 2
PROJECT NO. H.5198.27066